



# Amfeed-Q

## FEEDING MACHINE

High Quality  
Ergonomic small piece feeding  
Adjustable spreading tension per program  
Touchscreen panel  
One or two lane feeding

# SPECIFICATION

## Standard Features :

- Suction under feeding bed Stretch conveyor
- Multilane small pieces feeding
- Automatic speed synchronization with the ironer
- Touchscreen panel
- 100 free programmable programs
- Adjustable spreading tension per program
- Inlet rollers above the suction box
- Preparation for M.I.S
- Stainless steel guiding plate under clipping stations
- Photocell face down
- Acoustical warning alarm

## Optional Features :

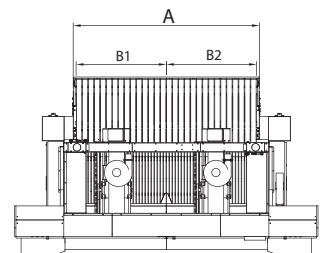
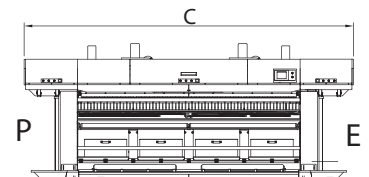
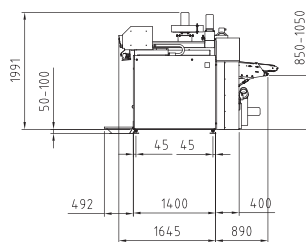
- Working width up to 4100mm
- Small piece unit
- Spreading brushes on feeding nose
- Adjustable vacuum suction box
- Feeding bed speed reduction
- Leading edge treatment
- Rear edge treatment
- Direct feeding into the ironer
- Ironer protection
- Bag for small pieces
- Stains and tears buttons
- Automatic ironer speed control from feeder
- Laser position line on feeding bed
- Lifting device
- Automatic 1 or 2 lane feeding
- Sparepart kit
- Special color
- Other options on request

## Technical Information :

- Electrical
  - Voltage : 3x400 V+N+PE / 50 Hz
  - Power : 3.5-7 kW, Fuses 16A\*
- Pneumatic
  - Pressure : 6 - 10 Bar
  - Consumption : 12,000 NI/1000 sheets
  - Connection : 3/8" (1/2" tube)
- Miscellaneous
  - Noise level : 75 dBA
  - Speed : 8 up to 40 m/min
- Production Materials Sheets
  - Sheets, table linen, draw sheets, etc.
  - Max. size 1 lane : 3.3 m x working width
  - Min. size 1 lane : 0.9 m x 0.9 m
  - Small pieces
    - Max. size multilane : 3.3 m x lane width
    - Min. size multilane : 0.4 m x 0.25 m

\*value is depending on options and program

Specification of design is subject to change without notice.  
For additional options please consult factory and distributor.



	Working width A	C	B1	B2	B3
1 lane	3000 [118 1/8"]	5044 [198 1/2"]	1500 [59"]	1500 [59"]	
	3300 [130"]	5044 [198 1/2"]	1650 [65"]	1650 [65"]	
	3500 [137 4/5"]	5494 [216 1/4"]	1750 [68 7/8"]	1750 [68 7/8"]	
	3700 [145 2/3"]	5494 [216 1/4"]	1850 [72 7/8"]	1850 [72 7/8"]	
2 lane	3000 [118 1/8"]	5044 [198 1/2"]	975 [38 3/8"]	1050 [41 3/8"]	975 [38 3/8"]
	3300 [130"]	5044 [198 1/2"]	1125 [44 1/4"]	1050 [41 3/8"]	1125 [44 1/4"]
	3500 [137 4/5"]	5494 [216 1/4"]	1125 [44 1/4"]	1200 [47 1/4"]	1125 [44 1/4"]
	3700 [145 2/3"]	5494 [216 1/4"]	1275 [50 1/4"]	1200 [47 1/4"]	1275 [50 1/4"]



UKAS  
ISO 9001 : 2008



UKAS  
ISO 14001 : 2004

ACCURATE TECHNOLOGIES CO., LTD.

Bangkok, Thailand Phone : +66(0)2740-5511 (Auto) Fax : +66(0)2752-2773

Website : www accuratethai.com Email : sales@ accuratethai.com

Rev. 2015-001